



ACCOMMODATION GUIDE

2018 - 2019

NEOMA

BUSINESS SCHOOL

Paris Campus




SUMMARY

- 1 - NEOMA Business School Housing Service..... **p.3**

- 2 – Different accommodation possibilities
 - Student residences..... **p.4 - 10**
 - Landlords..... **p.11**
 - Real Estate Agencies offers..... **p.12**
 - Crous Housing Service **p.13**

- Notes **p.14-15**
- Contact **p.16**



PRESENTATION



Faites comme chez vous

Réservez votre logement parmi des propriétaires de confiance

Ecole/Ville

Rechercher

En partenariat avec Allianz

NEOMA Business School Housing Service

Through its housing service, your school has set up a platform, edited by Studapart, enabling you to find accommodation more easily. Numerous offers from private owners, student residences and real estate agencies around the campus, are grouped on your school's housing platform and updated daily:

<https://housing-platform.neoma-bs.fr/en>

Students can make booking requests directly on the platform with their online rental application

Each NEOMA BS student can access to offers by connecting with his school login Credentials

These login credentials are provided to each student when he joins one of NEOMA's programs.

The display of offers on the internet platform is free and does not commit our school. You must ensure to always sign a lease within the law.

NEOMA
BUSINESS SCHOOL

STUDENT RESIDENCES



Odalys Paris Levallois – REF #1687

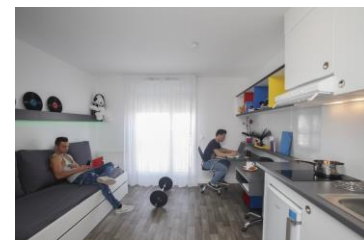
Accommodation types :

Type	Area	Furnished	Rent/month	Booking fees
Studio	19 m ²	Yes	790 to 840€	250€
T2	31 m ²	Yes	1100 to 1120 €	250€

**Prices are indicative and not contractual*

During the year, several residences benefit from specific promotions for students of NEOMA BS

A student residence at the gates of Paris Located 200 m from Paris, close to universities and grandes écoles, the residence Odalys Campus Paris Levallois has a privileged geographical location in a very qualitative living environment. The subway, the bus lines and the train station are located in the immediate vicinity of the residence. This unique location provides easy access to all higher education institutions in and around Paris. Student housing equipped and functional The 158 studios of 19 m² are equipped with a kitchenette including microwave, electric hob and fridge, a bathroom with toilet, a living room furnished room. The 10 T2 of 30 m² benefit from an extra bedroom.



ACCESS : 3,5 km from NEOMA BS – 12 min on public transport



HOW TO BOOK ?

Negotiated and prioritized access conditions via the housing platform of NEOMA Business School

<https://housing-platform.neoma-bs.fr/en/school/advert/residence/1687>

Any problem ? Call us at +33 1 80 92 64 01

STUDENT RESIDENCES



Studea Hauts De Seine – REF #531

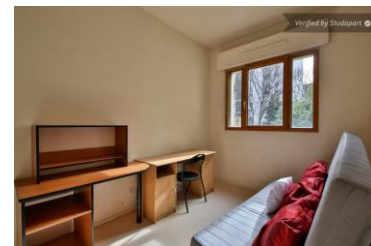
Accommodation types :

Type	Area	Furnished	Rent/month	Booking fees
Studio	15 to 24 m ²	Yes	538 to 640€	750 €
T1	26 to 47 m ²	Yes	725 to 750€	750 €

**Prices are indicative and not contractual*

During the year, several residences benefit from specific promotions for students of NEOMA BS

Located in the center of Clichy, you benefit from the calm of this suburban town and the proximity of the capital. This student residence offers all the amenities of daily life with many shops and a supermarket, theaters and cinemas nearby. Near the banks of the Seine, this rental allows both access to university centers in the North of Paris and to be in 15 minutes in the center of Paris via metro line 13 from the stop Mairie de Clichy located at the foot of the residence. It has studio and T1 apartments. In this student housing, rents are agreed and therefore accessible to many students. The residence also offers a multitude of à la carte services to make your daily life easier, including a launderette, a car park and a drinks vending machine. This residence is equipped with video surveillance.



ACCESS : 3,7 km from NEOMA BS – 14 min on public transport



HOW TO BOOK ?

Negotiated and prioritized access conditions via the housing platform of NEOMA Business School

<https://housing-platform.neoma-bs.fr/en/school/advert/residence/531>

Any problem ? Call us at +33 1 80 92 64 01

STUDENT RESIDENCES

Studea St Ouen 1 – REF #586

Accommodation types :

Type	Area	Furnished	Rent/month	Booking fees
Studio	18 to 34 m ²	Yes	659 to 908€	0 to 350€

**Prices are indicative and not contractual*

During the year, several residences benefit from specific promotions for students of NEOMA BS

Close to 3 university campuses, the student residence Saint-Ouen 1 is located near Paris and close to many corporate headquarters. At the heart of the urban transport network, this student residence has access to the RER C Saint Ouen stop and metro line 13 Garibaldi stop just a few steps away. Designed for a pleasant and practical daily life, the apartments at the student residence Saint-Ouen 1 are furnished and equipped with a kitchenette. Various services are offered, such as breakfast service, a cafeteria or a launderette. Equipped with a photocopier, it offers a space for concentration. Equipped with access control, this student residence in Saint-Ouen 1 emphasizes the tranquility of its occupants in this cosmopolitan area. It offers comfortable studios from 17 m² to 33 m² with unlimited fiber optic Internet access and offered in each apartment.



ACCESS : 4,3 km from NEOMA BS – 24 min on public transport

HOW TO BOOK ?

Negotiated and prioritized access conditions via the housing platform of NEOMA Business School

<https://housing-platform.neoma-bs.fr/en/school/advert/residence/586>

Any problem ? Call us at +33 1 80 92 64 01

STUDENT RESIDENCES

Studea St Ouen 2 – REF #587

Accommodation types :

Type	Area	Furnished	Rent/month	Booking fees
Studio	16 to 34 m ²	Yes	649 to 851€	0 to 350€

**Prices are indicative and not contractual*

During the year, several residences benefit from specific promotions for students of NEOMA BS

The student residence Saint-Ouen 2 is located in the immediate vicinity of Paris and its amenities. At the heart of the public transport network, it is just a few steps from the RER C Saint Ouen stop and metro line 13 Garibaldi stop. The numerous head offices of companies located in the city make the student residence Saint-Ouen 2 a strategic accommodation. Fully equipped and furnished, the studios of the residence ensure a quick and easy installation. Cafeteria, laundry, kitchenette, but also cleaning services or breakfast, among others, are offered to the occupants. Each room is also equipped with a free and unlimited fiber optic internet connection. Moving to the student residence Saint-Ouen 2 means choosing a pleasant and serene daily newspaper.



ACCESS : 4,3 km from NEOMA BS – 23 min on public transport

HOW TO BOOK ?

Negotiated and prioritized access conditions via the housing platform of NEOMA Business School

<https://housing-platform.neoma-bs.fr/en/school/advert/residence/587>

Any problem ? Call us at +33 1 80 92 64 01

STUDENT RESIDENCES



Studea Buttes Chaumont 1 – REF #515

Accommodation types :

Type	Area	Furnished	Rent/month	Booking fees
Studio	17 to 24 m ²	Yes	799 to 952€	750 €

**Prices are indicative and not contractual*

During the year, several residences benefit from specific promotions for students of NEOMA BS

The prestigious film schools and the Cours Florent are right next to the student residence Studéa Buttes Chaumont 1. At the lunch break, treat yourself to a picnic in the beautiful park of Buttes Chaumont located just a minute away and enjoy the many shops nearby. The residence is located in a pleasant neighborhood of Paris, a few meters from the Ourcq canal and at the same time close to the hyper center. Take advantage of the services of the residence before attending your classes, and surf the Internet at any time thanks to the access offered. Between the two metro stops Ourcq and Laumière on line 5.

ACCESS : 5,2 km from NEOMA BS – 32 min on public transport



HOW TO BOOK ?

Negotiated and prioritized access conditions via the housing platform of NEOMA Business School

<https://housing-platform.neoma-bs.fr/en/school/advert/residence/515>

Any problem ? Call us at +33 1 80 92 64 01



STUDENT RESIDENCES



Studea Paris Tessier – REF #878

Accommodation types :

Type	Area	Furnished	Rent/month	Booking fees
Studio	18 to 26 m ²	Yes	744 to 873€	0 to 950€

**Prices are indicative and not contractual*

During the year, several residences benefit from specific promotions for students of NEOMA BS

New residence since 2016, with a recent and modern architecture, it is located in a district very well served in the heart of the nineteenth arrondissement of Paris, not far from the Parc de la Villette, the Sacré Coeur or the Marais. It offers tastefully decorated rooms and many services: internet, laundry, rental of dishes, cleaning service, breakfast, linens, CCTV, local two wheels. The residence is close to the Paris Condorcet campus, the National School of Architecture, the National Conservatory of Music and Dance of Paris, the INSEEC Group, the Cours Florent, the Conservatoire Libre du Cinéma Français, the CEPROC and the European Vocational Training Center: ICOGES Group. Access by Crimea metro station (line 6) or Rosa Parks station (RER E).



ACCESS : 5,3 km from NEOMA BS – 18 min on public transport



HOW TO BOOK ?

Negotiated and prioritized access conditions via the housing platform of NEOMA Business School

<https://housing-platform.neoma-bs.fr/en/school/advert/residence/878>

Any problem ? Call us at +33 1 80 92 64 01

STUDENT RESIDENCES

Studea Jean Cocteau – REF #579

Accommodation types :

Type	Area	Furnished	Rent/month	Booking fees
Studio	16 to 23 m ²	Yes	650 to 797€	0 to 450€

**Prices are indicative and not contractual*

During the year, several residences benefit from specific promotions for students of NEOMA BS

Located in the 18th district, close to the university center of Clignancourt, Studéa Jean Cocteau residence will allow you to easily reach the various Parisian districts, thanks to its proximity to public transport. A 10-minute walk from Porte de la Chapelle (metro line 12) and Porte de Clignancourt (metro line 4). The residence offers studios furnished and equipped with free and unlimited optical fiber. Within the residence, many services embellish your daily life: a launderette, a photocopy, a cleaning service, etc. This student accommodation in Paris 18 has an outdoor parking and a room for two wheels, entirely reserved for students.



ACCESS : 6 km from NEOMA BS – 34 min on public transport

HOW TO BOOK ?

Negotiated and prioritized access conditions via the housing platform of NEOMA Business School

<https://housing-platform.neoma-bs.fr/en/school/advert/residence/579>

Any problem ? Call us at +33 1 80 92 64 01



LANDLORDS



LANDLORDS

Many landlords publish their offers on NEOMA BS Housing platform. You can find rentals, flat sharing and homestay accommodations on the platform
International students can nook an accommodation by a private landlord !.

HOW TO SEE OFFERS?

Go to NEOMA BS Housing platform:

<https://housing-platform.neoma-bs.fr/en>

Or contact us at + 33 1 80 92 64 01



OUR REAL ESTATE AGENCIES PARTNERS

**PALISSEAUX
IMMOBILIER**
AGENCE FNAIM

Find the Agencies offers on:

<https://housing-platform.neoma-bs.fr/en/profile/agency/272>



GRUPE BSI OGIPA

ADMINISTRATEUR DE BIENS
AGENCE IMMOBILIERE

Find the Agencies offers on:

<https://housing-platform.neoma-bs.fr/en/profile/agency/294>



Paname immobilier

Find the Agencies offers on:

<https://housing-platform.neoma-bs.fr/en/profile/agency/255>



Find the Agencies offers on:

<https://housing-platform.neoma-bs.fr/en/profile/agency/299>

CROUS HOUSING SERVICE

CROUS of PARIS

39 Avenue Georges Bernanos, 75005 Paris

Phone. 01 40 51 62 00

Website: <https://www.crous-paris.fr>

Accommodations in university residences are mainly reserved for fellows, but all students can benefit according to availabilities.



Important: In housing in HLM (eg residence of Faculties), the supply and consumption of electricity is individualized. It is necessary to subscribe a contract of subscription with a supplier and to regulate his consumptions with him. In addition, housing in HLM is subject to the housing tax.



Housing assistance: you can get housing assistance from the CAF by filing an application on their website: www.caf.fr If you are eligible, your residence will receive housing benefit for you and you will only pay the difference to your residence. Inquire at your arrival!

CONTACT



HOUSING CONTACT

Times : 8 am / 8 pm
6 / 7 days

 **Phone : +33 1 80 92 64 01**

 **booking@studapart.com**